

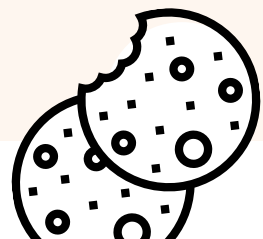
## Entrees & Appetizers



<b>Large Cheese Pizza</b>	13.50
Add Pepperoni or Hamburger for 1.25	
<b>Pizza by the Slice</b>	2.75
SUBJECT TO AVAILABILITY ↪	
<b>Mac and Cheese</b>	3.50
<b>Chicken Tenders or Nuggets</b>	3.50
<b>Side of Waffle Fries</b>	2.50
<b>Basket of Waffle Fries</b>	4.00
<b>Mozzarella Sticks</b>	4.75
<b>Soft Pretzel</b>	3.75
Add a Cheese Cup for \$1	
<b>Organic Frozen Acai Bowl</b>	5.75
Includes Strawberries, Blueberries, & Toasted Granola with Coconut	

## Somethin' Sweet

<b>Eileen's Cookie</b>	2.50
<b>Ice Cream Cup</b>	1.75



## Smoothies

<b>Drink Up Buttercup</b>	5.50
Tropical Mix, Berries	
<b>Give Me Some Greens</b>	
Tropical Mix, Spinach	

## Beer & Wine

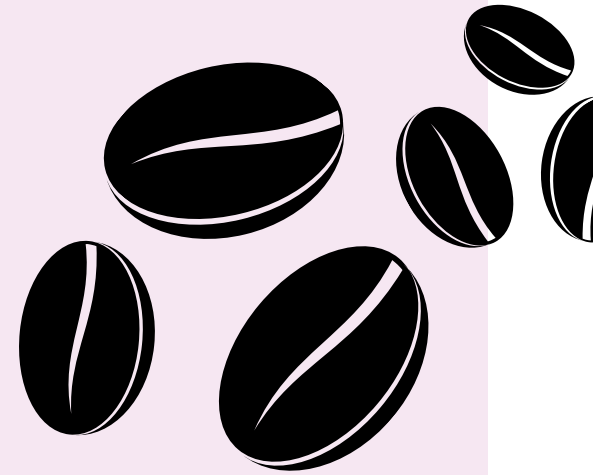
<b>Local Beer</b>	5.00
Fields and Ivy - Selections Vary	
Free State - Selections Vary	
<b>Domestic Beer</b>	3.75
Michelob Ultra	
Bud Light	
<b>Cocktails, Hard Seltzer &amp; Cider</b>	
Clubtails	6.00
White Claw/Truly	3.50
<b>Wine</b>	4.50
Selections Vary	



## Specialty Lattes

AVAILABLE HOT OR ICED

<b>Rise &amp; Grind</b>	4.35/4.95
Dark Chocolate & Mint	
<b>Espresso Yo'Self</b>	
White Chocolate & Raspberry	
<b>Sorry I'm Latte</b>	
Caramel & Vanilla	
<b>No Depresso</b>	
Caramel, White Chocolate & English Toffee	



\*Oat & Almond Milk Alternatives available for 1.50  
\*Cold Foam Topping available for 1.00

## Tea & Cafe Drinks

<b>Chai Latte</b>	Hot or Iced	3.65/3.95
<b>Fresh Brewed Tea</b>	Hot or Iced ask for selections	3.00
<b>Cappuccino</b>		3.35/3.85
<b>Americano</b>	Hot or Iced	3.35/3.85
<b>Cold Brew</b>	Try it with Cold Foam!	3.65/3.95
<b>Hot Chocolate</b>		2.85